



Quick Reference QR Guide



A QUICK & EASY
LEARNING TOOL
THAT GUIDES YOU
THROUGH THE
FEATURES AND
FUNCTIONS OF THE

SIGNTEL INTERPRETER™ VR
& **SIGNTEL INTERPRETER™**
SOFTWARE PROGRAMS.

table of contents

Pg 2	Built in Features	Pg 9	Text-to-Speech
Pg 3	Installing Program	Pg10-11	Speech Recognition
Pg 4	Program Key	Pg12	Speech Recognition Training
Pg 5	Program Interface	Pg13	More Features
Pg 6	Control Interface	Pg14	Troubleshooting
Pg 7-8	Custom Settings		

Sigtel Inc., offers 2 versions of the Sigtel Interpreter™ Program. The Sigtel Interpreter™ and the Sigtel Interpreter™ VR (voice recognition). Please follow instructions for the version you have purchased.

Sigtel, Inc. suggests the following hardware specifications to effectively run the programs:

Sigtel Interpreter™ VR (w/Voice Recognition)	Minimum	Suggested
Processor	Pentium III 700 MHz	Pentium IV 1.5GHz
Memory	512MB	1GB or better
Free Hard Drive Space	2GB	4GB
CD-ROM Drive	24X	24X
Operating System	Windows 7	Windows 7, Windows 10
Accessories: SoundCard, Speakers and Microphone		

Sigtel Interpreter™	Minimum	Suggested
Processor	Pentium MMX 226 MHz	Pentium Celeron 333 MHz
Memory	32MB	256MB
Free Hard Drive Space	1GB	2GB
CD-ROM Drive	24X	24X
Operating System	Windows 7	Windows 7, Windows 10
Accessories: SoundCard and Speakers		

We highly recommend reading the [Users Manual](#) to get the optimum functionality of your Sigtel Interpreter. The complete Users Manual is located in the 'Start' menu.

Go To:

- ▶ Start ▶ Programs ▶ Sigtel Interpreter ▶ User's Manual

INTERPRETER

built-in features

THE SIGNTEL INTERPRETER HAS THE FOLLOWING BUILT IN FEATURES.

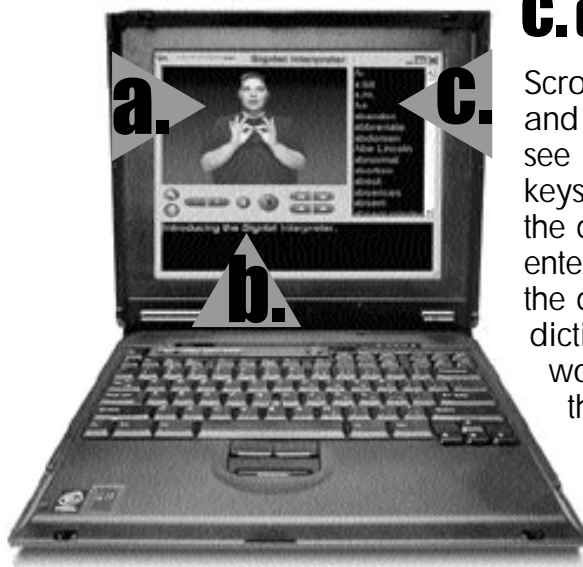
- Speech-to-Text & Sign Language (VR version only)
- Text-to-Sign translations
- Correctly signs various numbering systems including money, time, phone, decimals, dates and codes
 - Accurate differentiation of multiple meaning words
 - Synchronizes computer audio with any signing speed
 - Two way communication
 - Speech recognition (VR version only)
- Pop-up signing video box allows quick translation of text from anywhere, such as e-mail and the Internet
- Signtel signing dictionary on screen
- Save your text or use our Drag & Drop saving feature.
- Spell checker built into text box
- Make any signed word finger spelled
- Signing speed is adjustable 25%-300%
- Ability to pause, forward and rewind to any desired word or segment of text.
- Font size adjustable



program interface

a. video box:

Displays the video



C. dictionary box:

Scroll through the dictionary box and double click any word to see it signed, or utilize the arrow keys on the keyboard to scroll to the desired word and then press enter. To quickly find a word in the dictionary box - click any dictionary word then type the word you would like to find, the program will follow your spelling to find that word.

Remember, our program is not limited to the words in the dictionary box.

b. text box:

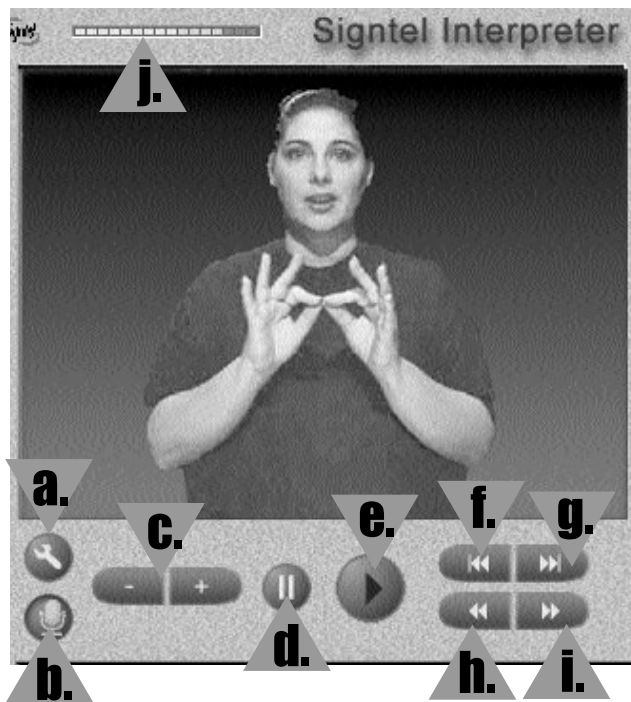
Place cursor in this box to type words and sentences, click on the play button on the interpreter or F9 on the keyboard to see it signed. The player only interprets the last sentence played.

To see full text signed from the beginning, press the BEGINNING button then press play. To erase text in the text box, right click in the video box and select CLEAR.

INTERPRETER

control interface

CONTROLS "B" AND "J" AVAILABLE ONLY ON VR VERSION

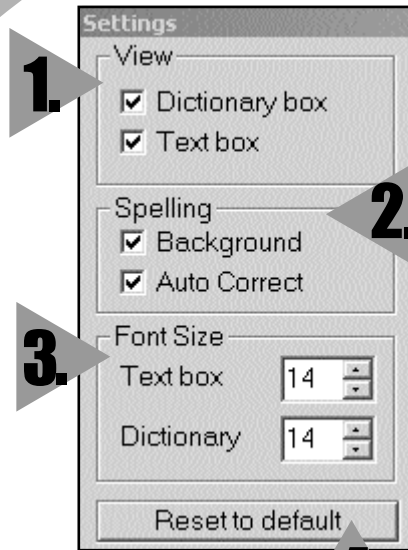


User-Friendly
Interface Design....

for fast and
easy accessibility.

- a.** Settings
- b.** Microphone On/Off
- c.** Speed Control
- d.** Pause
- e.** Play/Stop
- f.** Start Text at Beginning
- g.** Go to End of Text
- h.** Jump to Previous Sign
- i.** Jump to Next Sign
- j.** Microphone Level Meter

custom settings



1. VIEW

Dictionary Box-

Check this box if you would like the dictionary box to appear.

Text Box -

Check this text box

if you would like the text box to appear.

2. SPELLING

Background

Check this box if you would like misspelled words to appear in red.

Auto Correct

Check this box if you would like the program to automatically correct misspelled words. If the program does not automatically correct the misspelled word then the word will be highlighted in red. Right click on the word in red and a list of choices will appear. Click on the appropriate word.

3. FONT SIZE

You may change the font size in both the Text and Dictionary Boxes.

4. RESET TO DEFAULT

This option resets the system to the original setting.

INTERPRETER

custom settings

5. SPECIAL FEATURES

a. **Highlight Current Word-**

When this option is checked, the program will highlight the word in green as it is signed.

b. **Show Letters & Numbers-**

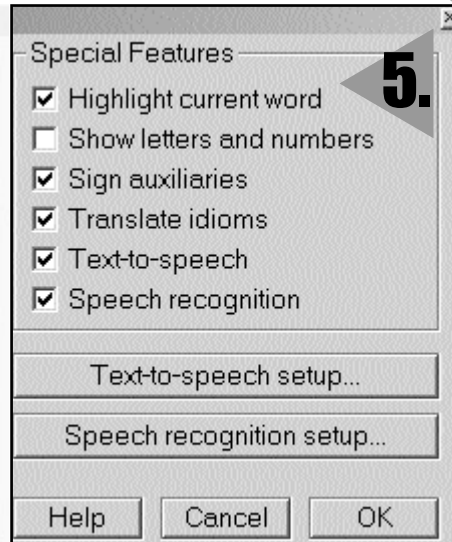
When this option is checked the program shows individual letters and numbers in the dictionary box

c. **Sign Auxiliaries**

When this option is checked the program will sign words such as; to, the, a, at, are and am in the sentence. If it is not checked then these types of words will not be signed.

d. **Translate Idioms**

When this option is checked, the program will translate Idioms and Phrases



e. **Text-to-Speech**

When this option is checked, the program will vocalize the text.

Note: If you have plugged in an external speaker the voice will only go to that speaker.

f **Speech Recognition**

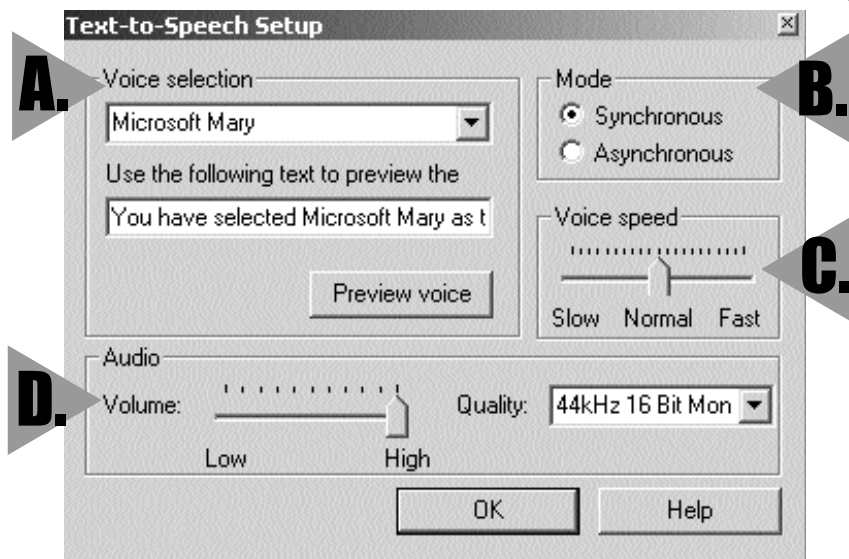
When this option is checked, speech recognition will become active and allow you to go into SPEECH RECOGNITION SETUP to customize options.

Note: You will also need to press the Microphone button on the Signtel Interpreter screen to start speech recognition. HELP is also on this screen.

INTERPRETER

text-to-speech

Customize your settings based on individual needs and preferences.



A. VOICE SELECTION: This option offers 3 different vocal selections. you may preview each voice.

B. MODE: You may select either Synchronous or Asynchronous speech.

C. VOICE SPEED: Adjusts the speed of the voice to match the speed of the signing.

D. VOLUME: Adjusts the playback volume.

speech recognition

(Sigtel Interpreter VR only)

Getting Started:

If you have never used the Speech Recognition feature, you will need to set it up.

1. Click on the SETTINGS button (wrench)
2. Check the Speech Recognition Box
3. Click on the Speech Recognition Setup



4. SELECT SIGNING MODE

Click on either Synchronous or Asynchronous.

- Synchronous will automatically translate your voice into sign language and text.
- Asynchronous will recognize your voice and translate it to text. To see it signed, Click on the play button.

Note: It is not necessary to unclick the microphone after pressing play, the microphone will automatically reactivate.

Only the last sentence will be signed. To play the text from the beginning, press **beginning**.



5. ADD USER

Click on ADD USER.

Type in user's name, and place a dot in the appropriate circle for male, female or unknown.

Note: This will take a few moments.

To delete a user's name, click on the delete user button and follow the prompts.

speech recognition (con't)

(Sigtel Interpreter VR only)



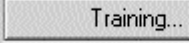
6. AUDIO WIZARD

Microphone Set-Up:

Carefully follow these instructions each time you use Speech Recognition.

- a. Plug the microphone into your computer (note the Sigtel program must be closed)
- b. Open the Sigtel Interpreter Program.
- c. Click on "settings" (the wrench icon)
- d. Click on "speech recognition set-up"
- e. Click "Audio wizard"
- f. Click "next"
- g. Click on "Advanced"
- h. Check "recording device" & make sure "Microphone" is checked.
- i. Select "USB Audio Device" or the Microphone type you are using.
- j. Click "Recording Settings" & follow steps 1,2 &3 then click "OK"
- k. Click the "Back" button to return to "Recording Volume" and follow the instructions to insure your Microphone is set up correctly.

7. TRAINING TOPICS

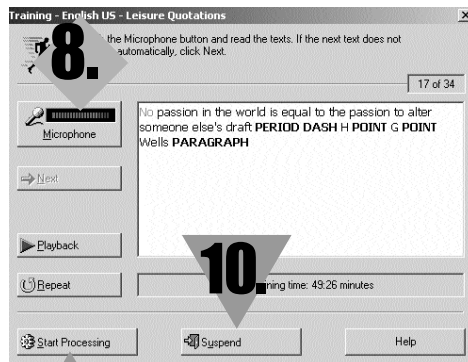
Press this  button to begin training. Select a topic, and then CLICK OK.

INTERPRETER

speech recognition (training)

(Sigtel Interpreter VR only)

The longer you train the Sigtel Interpreter,
the more accurate the voice recognition becomes.



9.

9. START PROCESSING

After you have completed some training, press **START PROCESSING**. This will incorporate your speech recognition training into the Sigtel Interpreter.

We recommend you process after every session, or you may hit suspend if you want to end your training session.

10. SUSPEND

You may quit training by clicking on **SUSPEND**.

8. MICROPHONE

Make sure that the microphone is picking up your voice.

To pause, click on the microphone. If you have a lot of unrecognized words, go back by clicking on the microphone to make it nonactive, then place the cursor in front of the first red word and click the microphone button again.

To start from the beginning, click on the microphone to make it nonactive and then click on **REPEAT**.

INTERPRETER

more features

SAVING TEXT

You may save text from the text box by right clicking on the Signtel icon in the top left hand corner, this will bring up the standard "save as" screen. Choose the location/program to save the text.

DRAG & DROP SAVING

Or, to send an e-mail with your selected multiple meaning words, grab the video box by left clicking, hold and drag into e-mail, note pad or desktop.

The reverse is also possible, grab and drop a file into the text box.

Note: AOL does not support this feature.

MAXIMIZE OR MINIMIZE SCREEN

Either click on the square boxes in the right corner or double click on the gray frame to maximize or minimize the size of the entire screen.



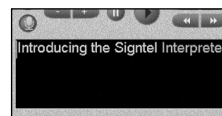
COLORS OF TEXT

RED TEXT

Indicates that a word may be misspelled. If you right click on the word a pop menu will appear. Click on the correct word and the word will be replaced.

GREEN TEXT

Indicates the word that is being signed.



BOLD TEXT

Indicates that the word has multiple meanings. Right click on the word and a pop up menu with definitions will appear. Click on the desired meaning and the program will replace the sign with the one you select.

FINGERSPELL OPTION

You can change any signed word into finger spelling by right clicking on the word and select FINGERSPELL.

INTERPRETER

more features

POP-UP SIGN BOX

- When the Signtel Interpreter is off and you would like to see text signed from another program, the Internet or an email, highlight the desired text by dragging the cursor across the text while holding the left mouse button, then simultaneously press CTRL+ Insert+Home.

The video box will automatically pop up and begin signing the text. While the text is being signed, you can select to see the text box and dictionary box by pressing the settings button to make any changes.

- When the Signtel Interpreter is on and you would like to copy text from another document, highlight the desired text by dragging the cursor across the text while holding the left mouse button, click on Copy, then click into the text box and press CTRL+V.



TWO WAY COMMUNICATION

Press the pause button to pause speech recognition, then type a response and hit play. Speech recognition will automatically resume once the text signing has finished.

Note - If you are in Asynchronous mode you must also hit play to see the speech recognition text signed

TROUBLESHOOTING

If the Signtel Interpreter or computer freezes, you can restart by pressing Ctrl + Alt + Delete

Select TASK MANAGER

Select SIGNTEL INTERPRETER

Select END NOW

Then EXIT

If the Signtel Interpreter is causing problems, close the program and exit from the tool bar, then re-open the Signtel Interpreter.

If you see black lines across the video box, grab the corner of the program with the mouse and enlarge the size of the screen.